

# 2021 Marching Band Warm-Ups

A. Buchholz

1A. Long Tones 1

Musical notation for section 1A, measures 1-16. The key signature is one sharp (F#) and the time signature is 4/4. The notation consists of three staves. The first two staves contain measures 1-10, and the third staff contains measures 11-16. The melody is: G4 (half), A4 (half), B4 (quarter), A4-G4 (quarter), F#4 (quarter), E4 (quarter), D4 (half), C4 (half). Measures 11-16 repeat the first six notes. Measure 16 ends with a double bar line and a fermata, with a '2' above it indicating a second ending.

1B. Long Tones 2

Musical notation for section 1B, measures 23-38. The key signature is one sharp (F#) and the time signature is 4/4. The notation consists of three staves. The first two staves contain measures 23-32, and the third staff contains measures 33-38. The melody is: G4 (half), A4 (half), B4 (quarter), A4-G4 (quarter), F#4 (quarter), E4 (quarter), D4 (half), C4 (half). Measures 33-38 repeat the first six notes. Measure 38 ends with a double bar line and a fermata, with a '2' above it indicating a second ending.

1C. Long Tones 3

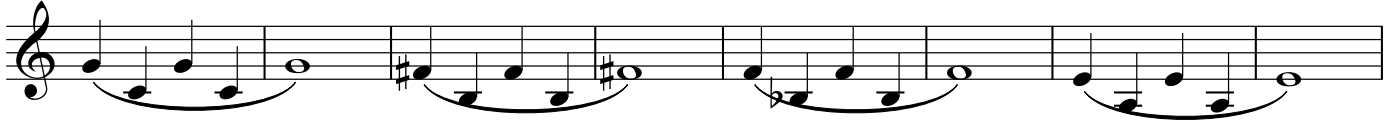
Musical notation for section 1C, measures 45-60. The key signature is one sharp (F#) and the time signature is 4/4. The notation consists of three staves. The first two staves contain measures 45-54, and the third staff contains measures 55-60. The melody is: G4 (half), A4 (half), B4 (quarter), A4-G4 (quarter), F#4 (quarter), E4 (quarter), D4 (half), C4 (half). Measures 55-60 repeat the first six notes. Measure 60 ends with a double bar line and a fermata, with a '2' above it indicating a second ending.



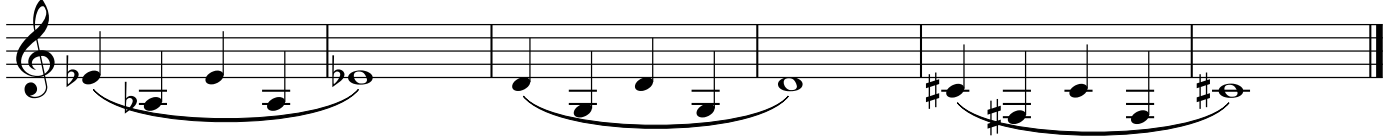
4A. Lip Slurs 1 (Unison)

Bass Clarinet in B $\flat$

128



136

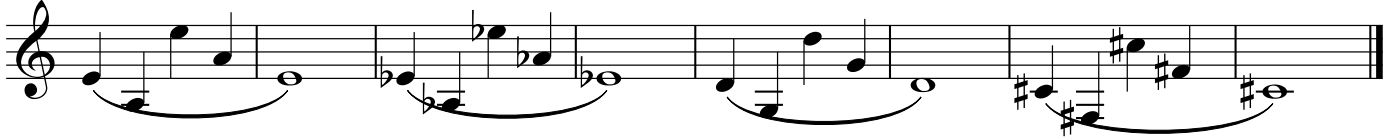


4B. (WW Option)

142



148

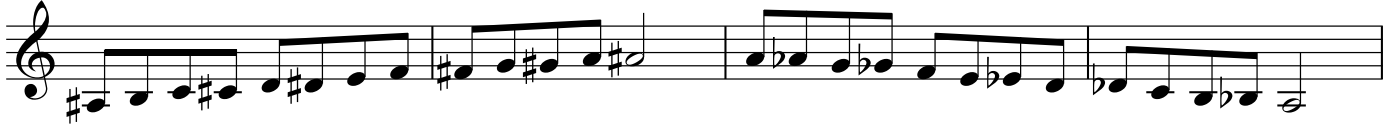


4C. Lip Slurs 2, WW Chromatic

156



160



164



167



Bass Clarinet in B♭

4D. Lip Slurs 3

170

174

178

181

5A. Pure Articulation Exercise

184

188

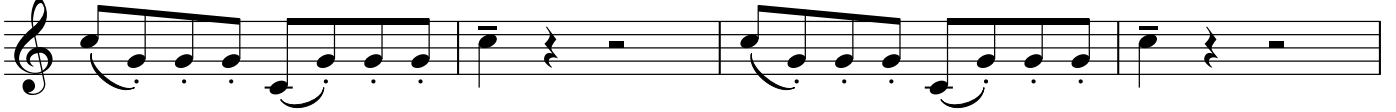
100%                      75%                      50%

194

5B. Articulation Exercise

Bass Clarinet in B $\flat$

199



203



208



213



218



223



227



232 6A. Counting Exercise 1

Musical notation for 6A. Counting Exercise 1, measures 232-243. The exercise consists of three staves of music in a single system. The first staff (measures 232-236) features a continuous eighth-note pattern. The second staff (measures 237-242) features a pattern of eighth notes with rests. The third staff (measures 243) concludes the exercise with a final eighth-note pattern and a double bar line.

248 6B. Counting Exercise 2

Musical notation for 6B. Counting Exercise 2, measures 248-262. The exercise consists of four staves of music in a single system. The first staff (measures 248-252) features a pattern of eighth notes with rests. The second staff (measures 253-257) features a continuous eighth-note pattern. The third staff (measures 258-261) features a pattern of eighth notes with rests. The fourth staff (measures 262) concludes the exercise with a final eighth-note pattern and a double bar line.

265 7A. Tuning Sequence

Musical notation for 7A. Tuning Sequence, measures 265-274. The exercise consists of two staves of music in a single system. The first staff (measures 265-273) features a sequence of notes with slurs and accents. The second staff (measures 274) concludes the sequence with a final note and a double bar line.

Musical notation for 7B. Tuning Chords, measures 275-281. The exercise consists of two staves of music in a single system. The first staff (measures 275-280) features a sequence of chords with slurs and accents. The second staff (measures 281) concludes the sequence with a final chord and a double bar line.

Musical notation for 7B. Tuning Chords, measures 282-287. The exercise consists of two staves of music in a single system. The first staff (measures 282-286) features a sequence of chords with slurs and accents. The second staff (measures 287) concludes the sequence with a final chord and a double bar line.